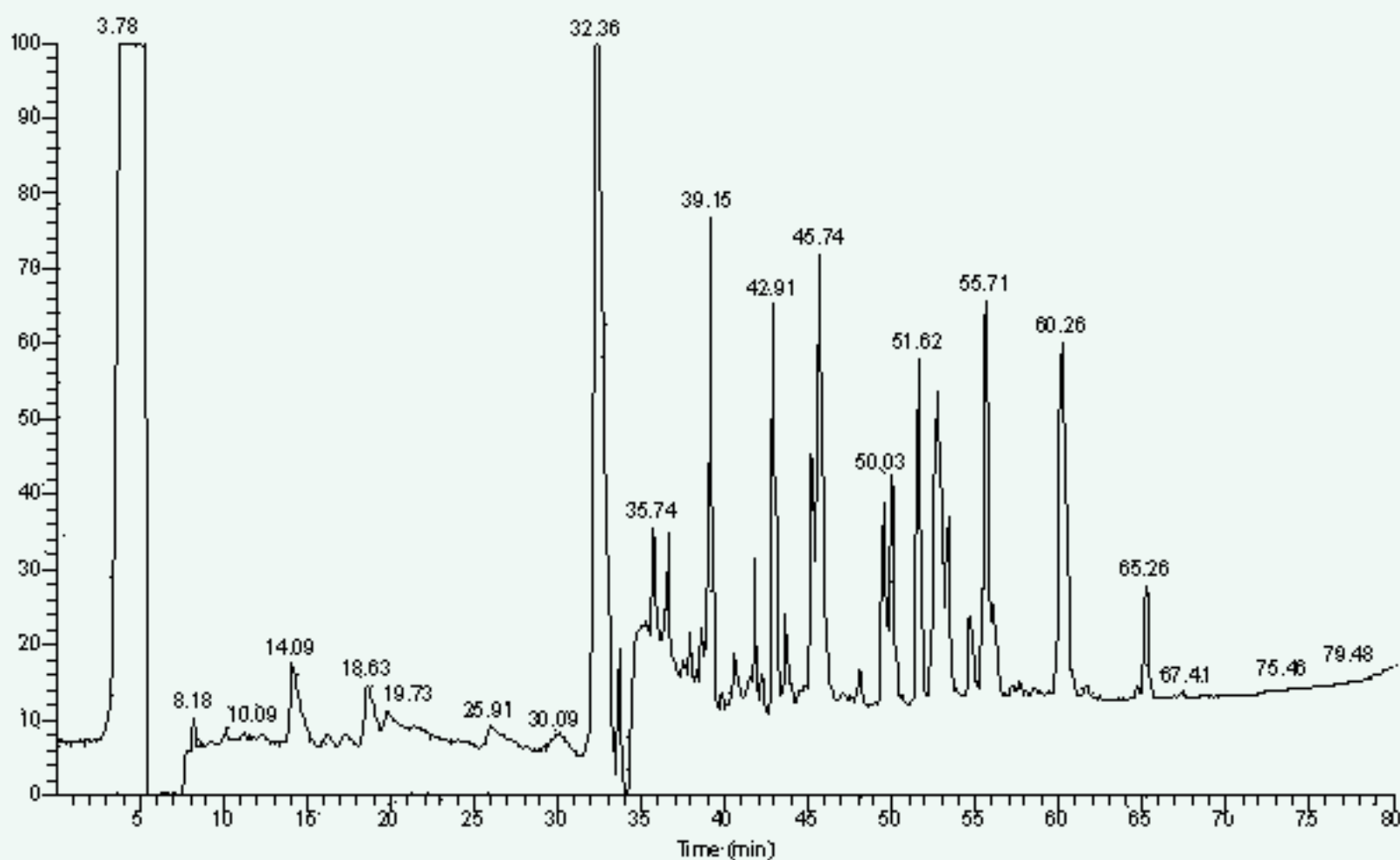


# LC-MS without TFA!



## Tryptic Map of Human Ocular Lens Protein Beta A1 crystallin and gamma S crystallin

**TARGA C18**

TARGA C18 5 $\mu$ m 150x0.5mm  
P/N TS-15M5-C185

Solvent A: 0.1% Acetic Acid

Solvent B: 0.1% Acetic Acid, 65% MeCN

0 - 50% B in 60min, 50 - 100%B in 15min, 10 $\mu$ L/min

Sample is a tryptic digest of a 2D electrophoresis separated spot digested from PDVF membrane. The two ocular proteins are ~25kD.

The LC/MS zoom scan below on the left confirms the peak at 39.15min is singly charged, and software interpretation of the MS/MS scan below on the right confirms the 1156.6 ion as residues 84-94 in human gamma S crystallin.

